

# JAMES JONES 110<sup>®</sup> COMPRESSION CONNECTIONS



Quick, sure connections for  
copper and plastic service lines.

**JONES**

# Connections designed to save time and money.

James Jones 110® Compression Connections provide a fast, sure way to make dependable, pressure-tight service line connections on copper and plastic:

- Visual indication when properly tightened.
- Saves time and labor, eliminates mistakes.
- No heating, flaring, cementing, threading or special tools required.
- No experience necessary.

## Simplicity

Using 110 Compression Connections couldn't be simpler:

- Clean the tubing or pipe end of burrs, grease or grime (insert a liner if using on plastic).
- Insert tubing or pipe end through the connection nut fully into the body.
- Tighten the nut until it bottoms out (a visual indication the connection is properly tightened).

The connection nut interior is coated with a low-friction fluorocarbon to reduce tightening effort and helps prevent distortion of the gasket as the nut is tightened. When properly tightened, the nut bottoms out, making metal-to-metal contact with a machined shoulder on the stop or coupling body.

## Positive seal

- Connection end consists of synthetic rubber gasket holding a stainless steel gripper band, assembled in cast bronze nut.
- As nut is tightened, gasket is compressed, creating positive seal.
- When using copper tubing, brass conductor spring molded into gasket provides metal-to-metal contact for electrical conductivity.

## Cold flow and pullout resistant

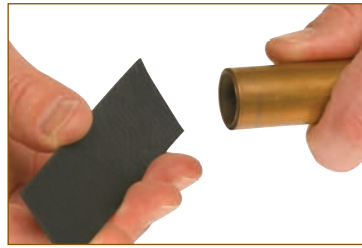
- Gasket is enclosed within the connection.
- Compressed gasket loads the gripper band with uniform pressure against the pipe circumference for extremely high pull-out resistance.

## Availability

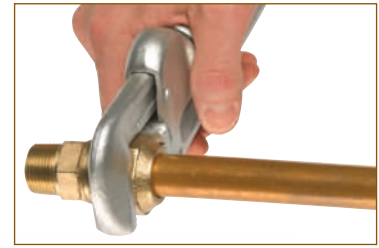
Two styles are available:

- For type "K" copper tubing and CTS O.D. PE plastic tubing.
- For IPS PE plastic pipe.

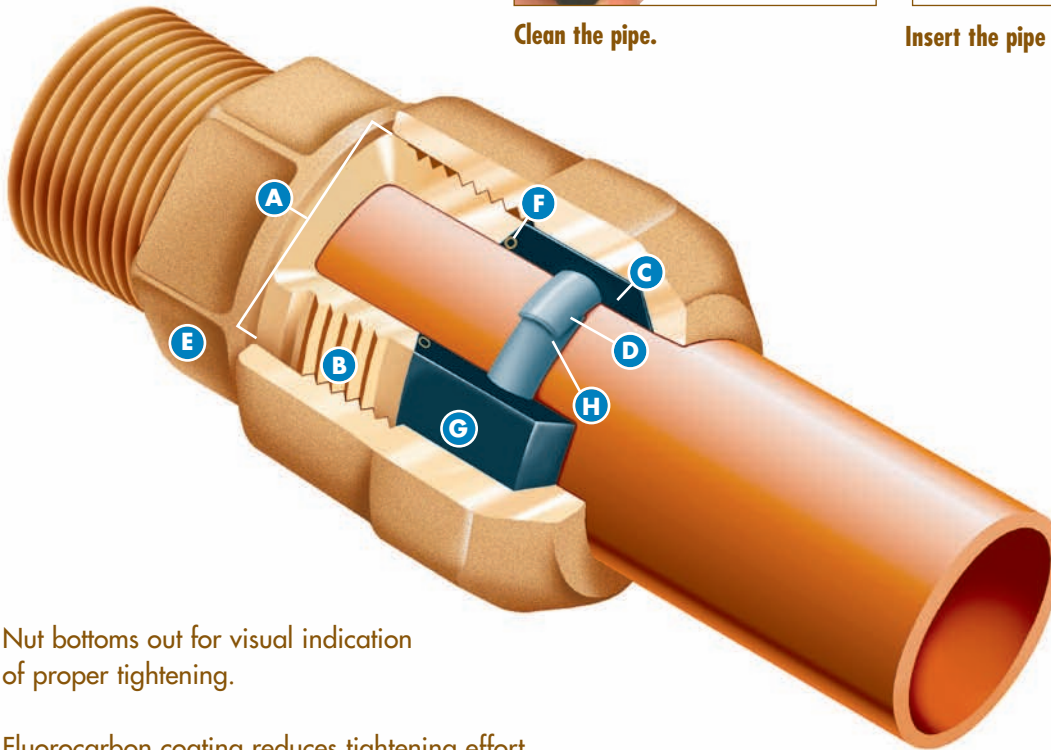
James Jones 110 Compression Connections are available separately or as integral parts of James Jones Valves, Yokes and Fittings. Ask your James Jones Distributor or Sales Representative for more information.



Clean the pipe.



Insert the pipe and bottom out the nut.



- A** Nut bottoms out for visual indication of proper tightening.
- B** Fluorocarbon coating reduces tightening effort, prevents gasket distortion.
- C** Entire gasket is enclosed, resists cold flow and creep.
- D** Uniform pressure exerted on gripper by gasket for positive gripping and pullout resistance.
- E** Cast bronze body is corrosion-resistant.
- F** Conductor spring provides metal-to-metal contact for electrical conductivity between copper pipe and fitting.
- G** Gasket seals against fitting body, pipe and nut.
- H** Stainless steel gripper band overlaps itself so no gasket material can get underneath.

### Also available on most valves and yokes.



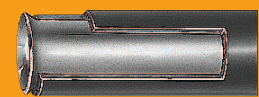
3-part unions, 1/8 & 1/4 bend couplings, "U" & "Y" branches and tees.



Corporation valve couplings.



Straight couplings, inside or outside I.P. thread.



Stainless steel liners to reinforce plastic pipe and tubing ends (purchased separately).

# JONES

Decatur, Illinois • 1-800-871-2194 • [www.jamesjones.com](http://www.jamesjones.com)

All products must be installed and maintained in accordance with applicable instructions and/or standards.

Form 12501-3/07-5M-1 • Copyright 2007 James Jones Company, Division Mueller Water Products, Inc. • Printed in U.S.A.

