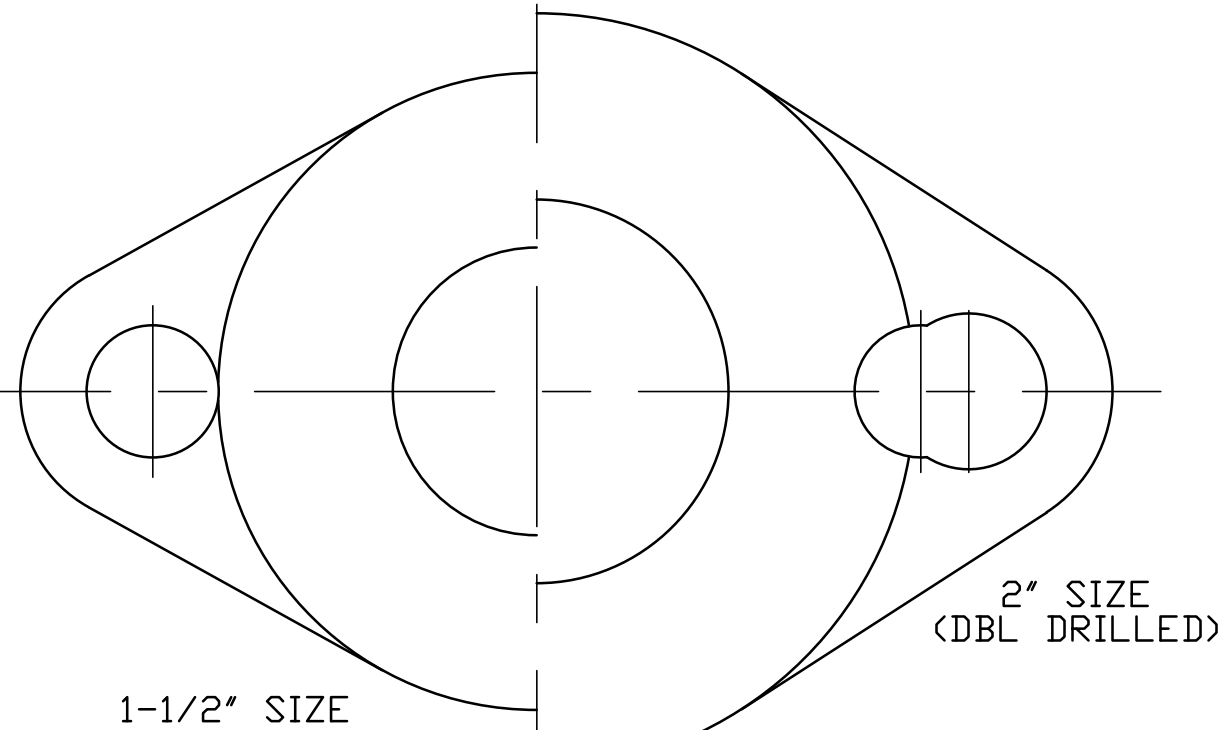
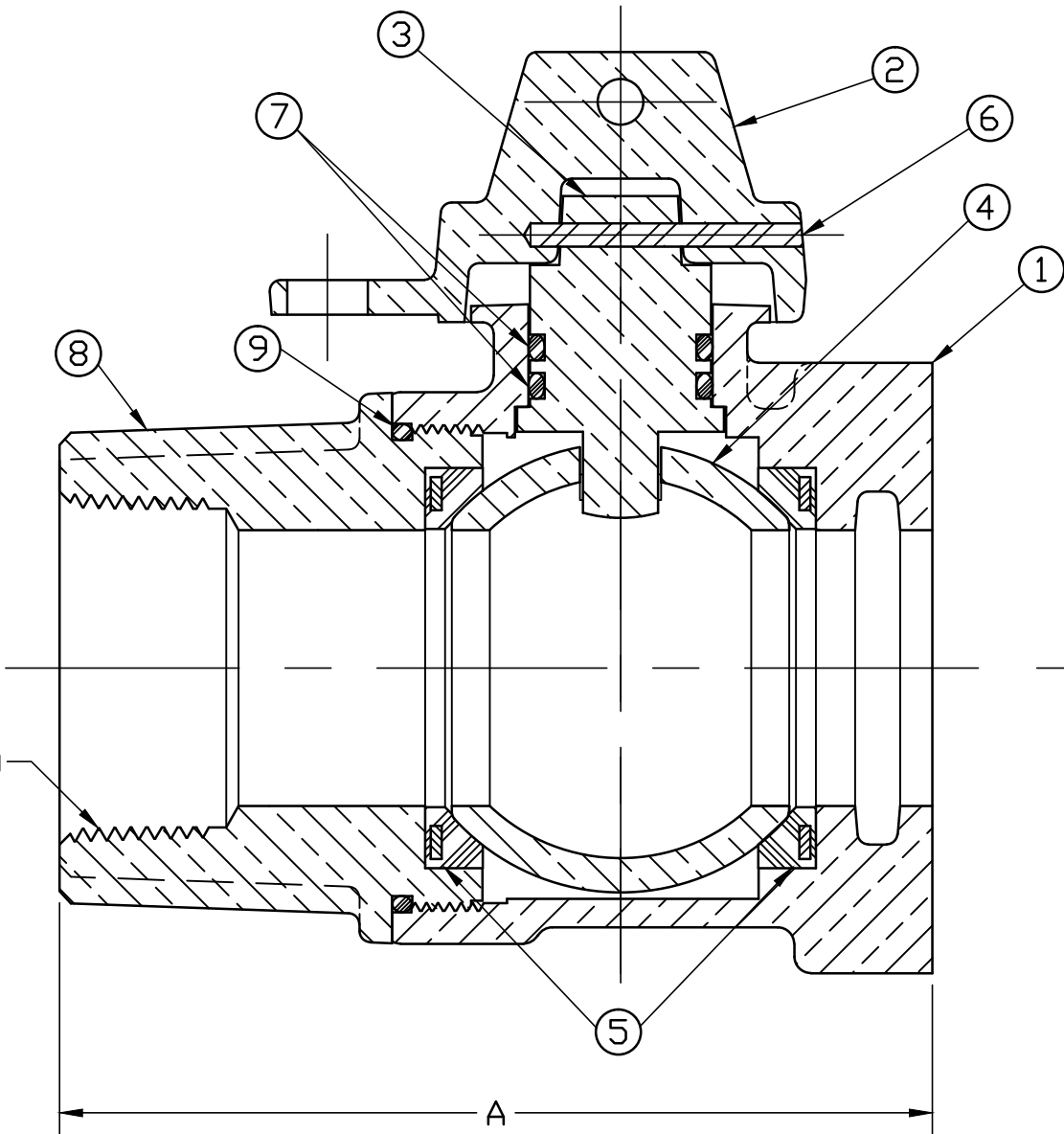


No.	DESCRIPTION	MATERIAL DESCRIPTION
1	BODY	CAST LOW LEAD BRASS ALLOY
2	CAP	CAST BRASS ASTM B62 ALLOY C83600
3	STEM	LOW LEAD BRASS ALLOY
4	BALL	LOW LEAD BRASS ALLOY
5	GASKET	NITRILE ASTM D2000
6	SOLID PIN	AISI 304 ANNEALED STAINLESS STEEL
7	O-RING	EP ASTM D2000
8	END PIECE	CAST LOW LEAD BRASS ALLOY
9	O-RING	EP ASTM D2000



VALVE SIZE	A	NPT SIZE
1-1/2"	4-61/64"	1-1/2"
2"	5-49/64"	2"

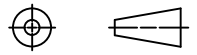
"NPT" THR'D

2" SIZE
(DBL DRILLED)

1-1/2" SIZE

PART NUMBER
E1912WJ
JJ-MRKTNG

FILEPATH: PRDD-ENG\JJ\SUBMITTALS\E1912WJ

DRFTR	RWB	2/4/10	JAMES JONES CO. UNLESS OTHERWISE NOTED SURFACE PREPARATION: BREAK CORNER(S) ---- .000 SURFACE FINISH -- XX RMS TOLERANCE(S): LINEAR ----- ± .000 ANGULAR ----- ± 0°00'				
CHKR							
ENGR							
MGR							
	BY	DATE	STK No:	THIRD ANGLE PROJECTION  REF. No. SCALE			
			MAT'L:				
			DESCR.				
REV	ECR	DESCRIPTION	DATE	BY	CHKR	BALL STRAIGHT LLB METER VALVE (FIP x METER FLANGE)	PART NUMBER E1912WJ