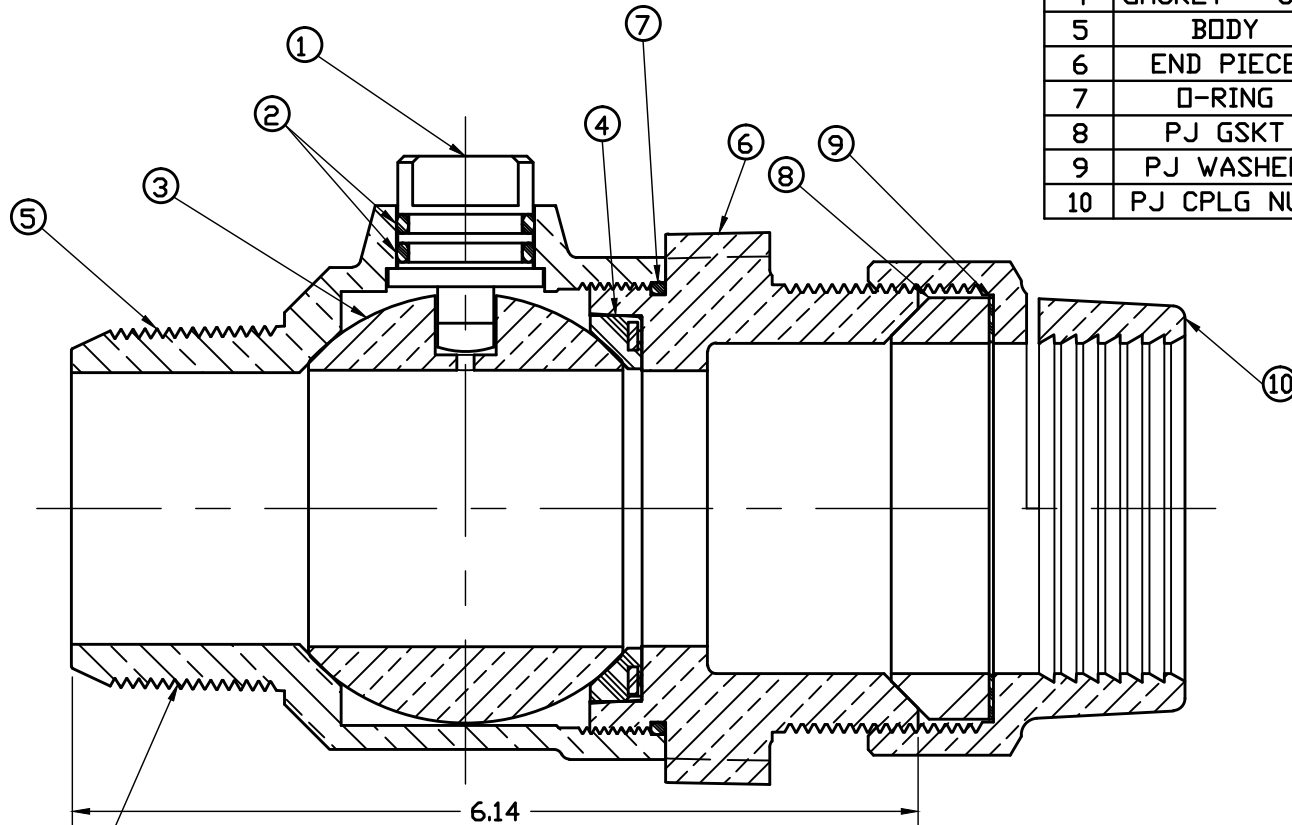


No.	DESCRIPTION	MATERIAL
1	STEM	LOW LEAD BRASS ALLOY
2	O-RING	EPDM ASTM D2000
3	BALL	LOW LEAD BRASS ALLOY
4	GASKET - SEAL	NITRILE ASTM D2000
5	BODY	CAST LOW LEAD BRASS ALLOY
6	END PIECE	CAST LOW LEAD BRASS ALLOY
7	O-RING	EPDM ASTM D2000
8	PJ GSKT	ASTM D2000 (BUNA N)
9	PJ WASHER	POLYPROPYLENE
10	PJ CPLG NUT	CAST BRASS ASTM B62 ALLOY C83600



AWWA "CC" TAPER THREAD

6.14

FILEPATH: PROD-ENG\JJ\SUBMITTALS\E1985 2

				DRFTR	jGarvin	3/5/10	JAMES JONES CO.			
				CHKR					UNLESS OTHERWISE NOTED SURFACE PREPARATION: BREAK CORNER(S) ---- .000 SURFACE FINISH -- XX RMS TOLERANCE(S): LINEAR ----- ± .000 ANGULAR ----- ± 0°00'	
				ENGR						THIRD ANGLE PROJECTION
				MGR						REF. No. SCALE
				BY		DATE				
				STK No:						
				MAT'L:						
				DESCR. 2" BALL TYPE CORPORATION VALVE			PART NUMBER			
				LOW LEAD BRASS (CC TAPER x PJ IPS PVC)			E1985 2			
REV	ECR	DESCRIPTION	DATE	BY	CHKR					

PART NUMBER
E1985 2

JJ-MRKTG