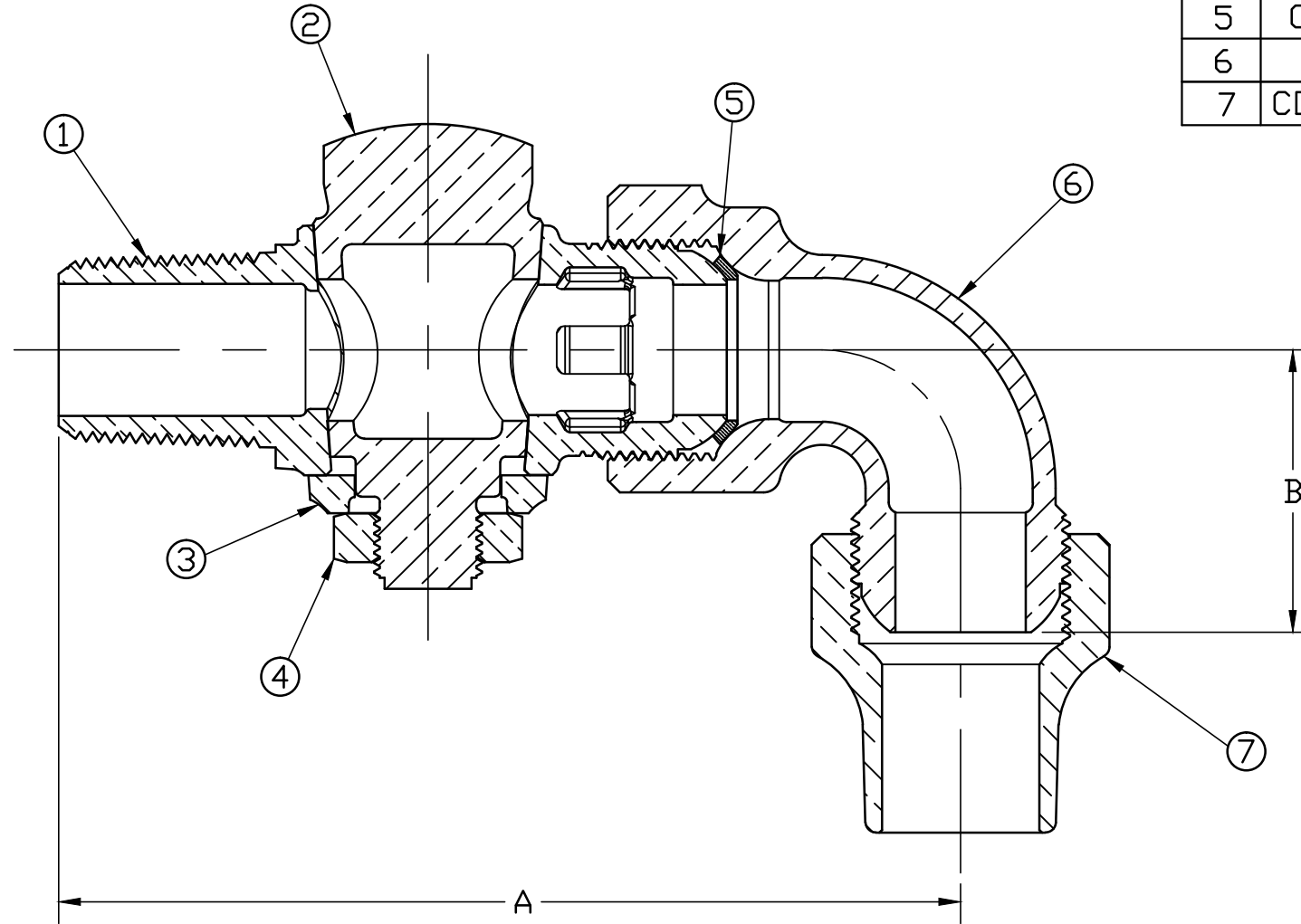


No.	DESCRIPTION	MATERIAL
1	BODY	CAST LOW LEAD BRASS ALLOY
2	KEY	CAST LOW LEAD BRASS ALLOY
3	KEY WASHER	CAST BRASS ASTM B62 ALLOY C83600
4	KEY NUT	CAST BRASS ASTM B62 ALLOY C83600
5	COPPER GASKET	COPPER SHEET ASTM B152 UNS C11000
6	SPUD	CAST BRASS ASTM B62 ALLOY C83600
7	COPPER TUBE NUT	CAST BRASS ASTM B62 ALLOY C83600



SIZE	A	B
1"	6.068	1.125

ALL WETTED PARTS ARE LOW LEAD BRASS ALLOY

FILEPATH: PROD-ENG\JAMES JONES\ASYSUBMITTALS\E1504

						DRFTR	RWB	4/13/16	JONES			
						CHKR						
						ENGR						
						MGR						
							BY	DATE	UNLESS OTHERWISE NOTED SURFACE PREPARATION: BREAK CORNER(S) ----- .000 SURFACE FINISH -- XX RMS TOLERANCE(S): LINEAR ----- ± .000 ANGULAR ----- ± 0°00'			
									THIRD ANGLE PROJECTION 			
									REF. No.			
									SCALE FULL			
						STK No:						
						MAT'L:						
						DESCR.	LLB CORP STOP COUPLING QUARTER BEND (AWWA x CS)					
						REV	ECR	DESCRIPTION	DATE	BY	CHKR	DWG NUMBER E1504
						PER EST NO: DXXXX EST FIN WT = 0.0000 lbs						

TITLE TO AND OWNERSHIP OF THIS ENGINEERING DATA REMAINS IN Mueller Co. NO USE IS TO BE MADE OF THIS DATA EXCEPT AS SPECIFICALLY AUTHORIZED BY Mueller Co. ASSENT ON THE PART OF THE RECIPIENT TO THESE CONDITIONS IS PRESUMED.

DWG NUMBER
E1504
JJ-MRKTG