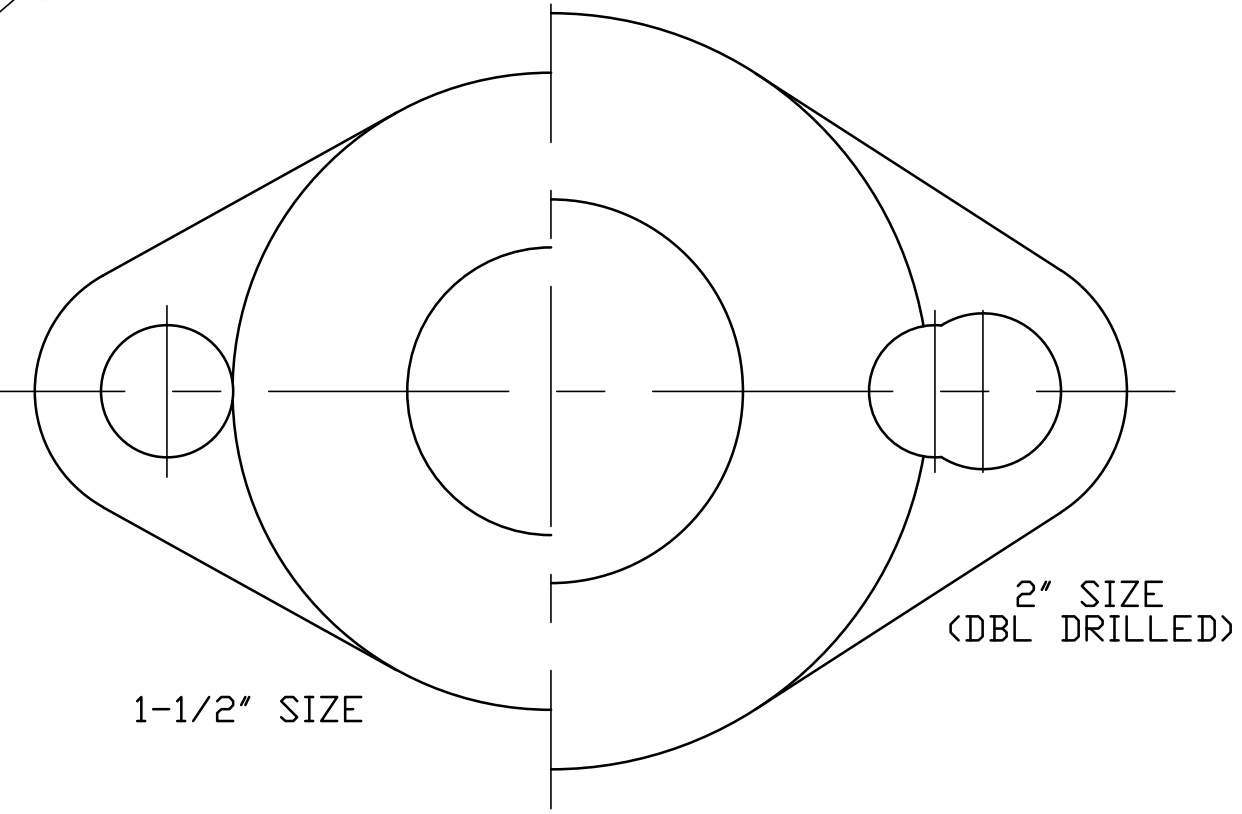
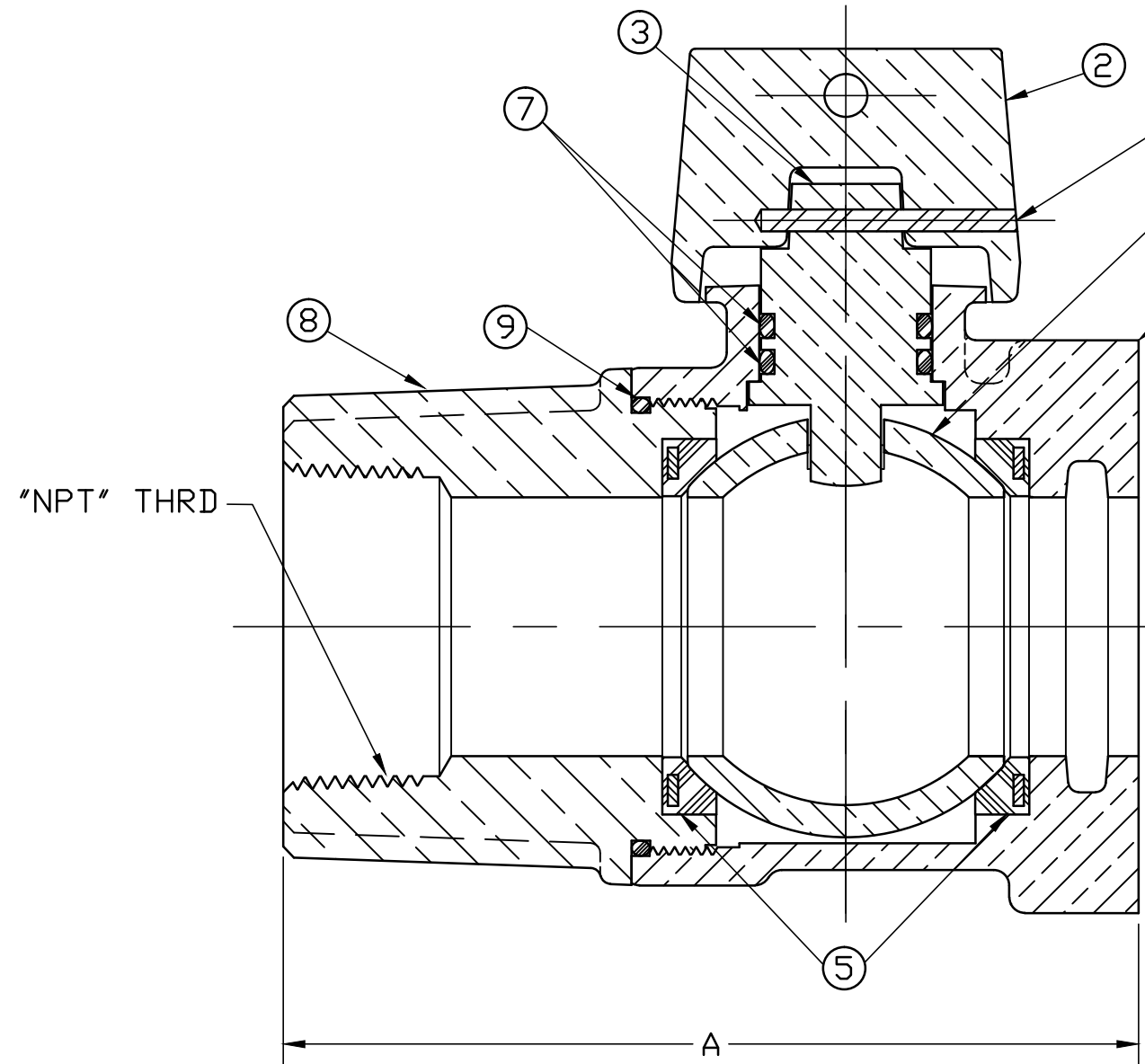


No.	DESCRIPTION	MATERIAL DESCRIPTION
1	BODY	CAST LOW LEAD BRASS ALLOY
2	CAP	CAST BRASS ASTM B62 ALLOY C83600
3	STEM	LOW LEAD BRASS ALLOY
4	BALL	LOW LEAD BRASS ALLOY
5	GASKET	NITRILE ASTM D2000
6	SOLID PIN	AISI 304 ANNEALED STAINLESS STEEL
7	O-RING	EP ASTM D2000
8	END PIECE	CAST LOW LEAD BRASS ALLOY
9	O-RING	EP ASTM D2000



ALL WETTED PARTS ARE LOW LEAD BRASS ALLOY

VALVE SIZE	A	NPT SIZE
1-1/2"	4-31/32"	1-1/2"
2"	5-49/64"	2"

FILEPATH: PROD-ENG\JJ\SUBMITTALS\E1912J

DRFTR	JGarvin	3/2/10	<b>JONES</b>		
CHKR					
ENGR					
MGR			UNLESS OTHERWISE NOTED THIRD ANGLE PROJECTION		
BY DATE			SURFACE PREPARATION: BREAK CORNER(S) ---- .000 SURFACE FINISH -- XX RMS		
STK No:			TOLERANCE(S): LINEAR ----- ± .000 ANGULAR ----- ± 0°00'		
MAT'L:			REF. No. SCALE		
DESCR. LLB BALL STRAIGHT METER VALVE (FIP x METER FLANGE)			DWG NUMBER E1912J		
REV	ECR	DESCRIPTION	DATE	BY	CHKR

TITLE TO AND OWNERSHIP OF THIS ENGINEERING DATA REMAINS IN Mueller Co. NO USE IS TO BE MADE OF THIS DATA EXCEPT AS SPECIFICALLY AUTHORIZED BY Mueller Co. ASSENT ON THE PART OF THE RECIPIENT TO THESE CONDITIONS IS PRESUMED

DWG NUMBER  
E1912J  
JJ-MRKTNG