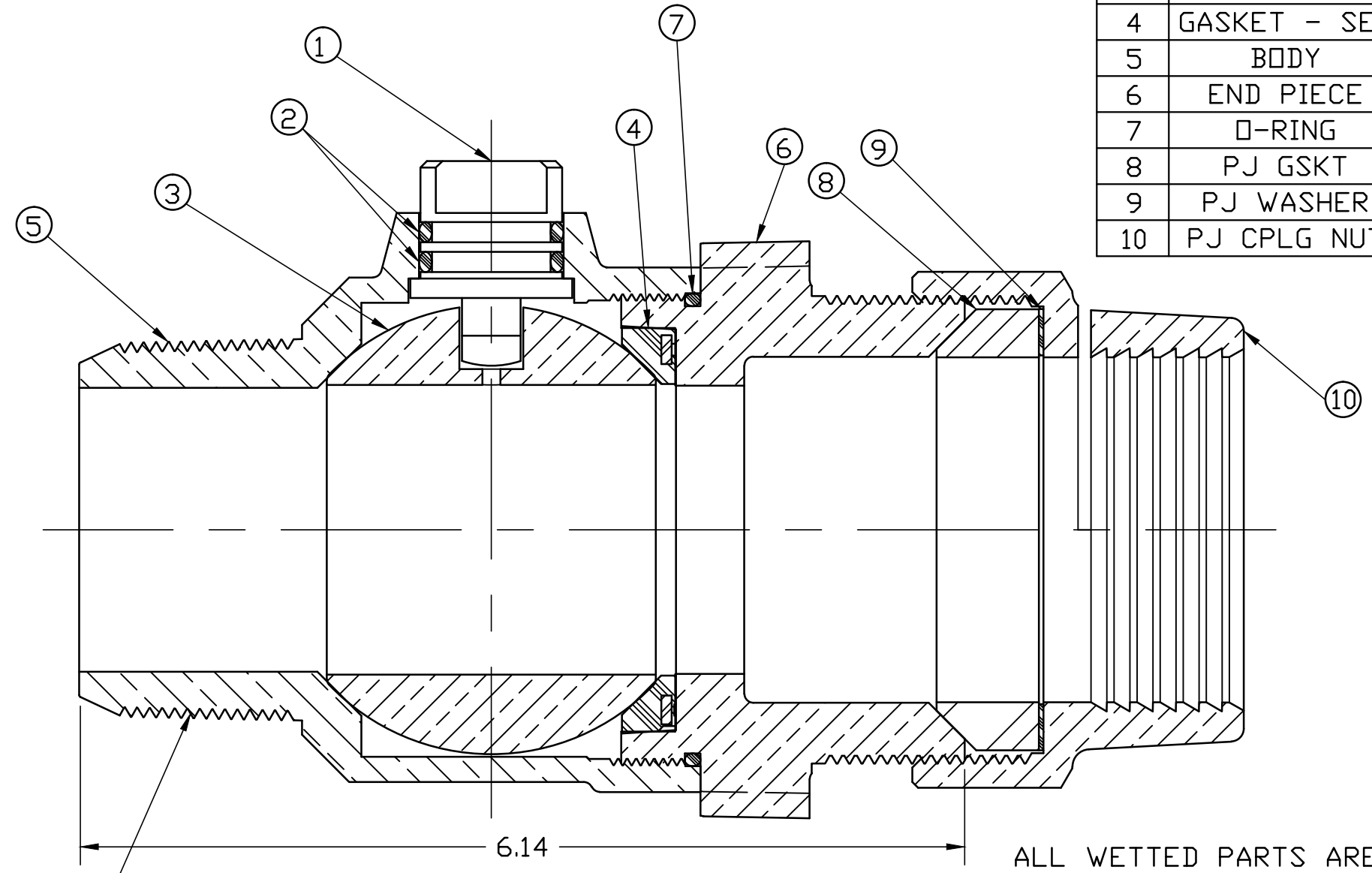


No.	DESCRIPTION	MATERIAL
1	STEM	LOW LEAD BRASS ALLOY
2	O-RING	EPDM ASTM D2000
3	BALL	LOW LEAD BRASS ALLOY
4	GASKET - SEAL	NITRILE ASTM D2000
5	BODY	CAST LOW LEAD BRASS ALLOY
6	END PIECE	CAST LOW LEAD BRASS ALLOY
7	O-RING	EPDM ASTM D2000
8	PJ GSKT	ASTM D2000 (BUNA N)
9	PJ WASHER	POLYPROPYLENE
10	PJ CPLG NUT	CAST BRASS ASTM B62 ALLOY C83600



AWWA "CC" TAPER THREAD

ALL WETTED PARTS ARE LOW LEAD BRASS ALLOY

FILEPATH: PROD-ENG\JJ\SUBMITTALS\E1985 2

DWG NUMBER
E1985 2
JJ-MRKTG

TITLE TO AND OWNERSHIP OF THIS ENGINEERING DATA REMAINS IN Mueller Co. NO USE IS TO BE MADE OF THIS DATA EXCEPT AS SPECIFICALLY AUTHORIZED BY Mueller Co. ASSENT ON THE PART OF THE RECIPIENT TO THESE CONDITIONS IS PRESUMED.

DRFTR	JGarvin	3/5/10	JONES	UNLESS OTHERWISE NOTED THIRD ANGLE PROJECTION SURFACE PREPARATION: BREAK CORNER(S) ---- .000 SURFACE FINISH -- XX RMS TOLERANCE(S): LINEAR ----- ± .000 ANGULAR ----- ± 0°00'	
CHKR					
ENGR					
MGR			REF. No.	SCALE	
	BY	DATE			
	STK No:				
	MAT'L:				
	DESCR.	2" BALL TYPE LLB CORP VALVE (CC TAPER x PJ IPS PVC)		DWG NUMBER E1985 2	
REV	ECR	DESCRIPTION	DATE	BY	CHKR