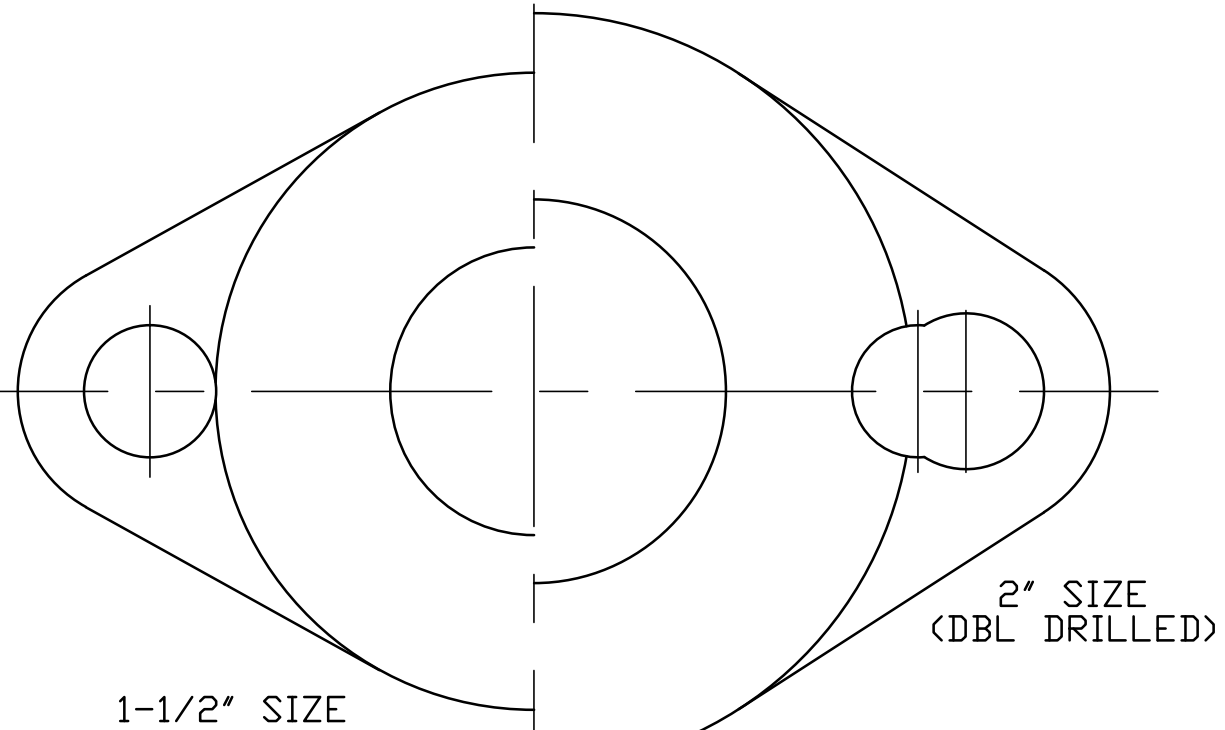
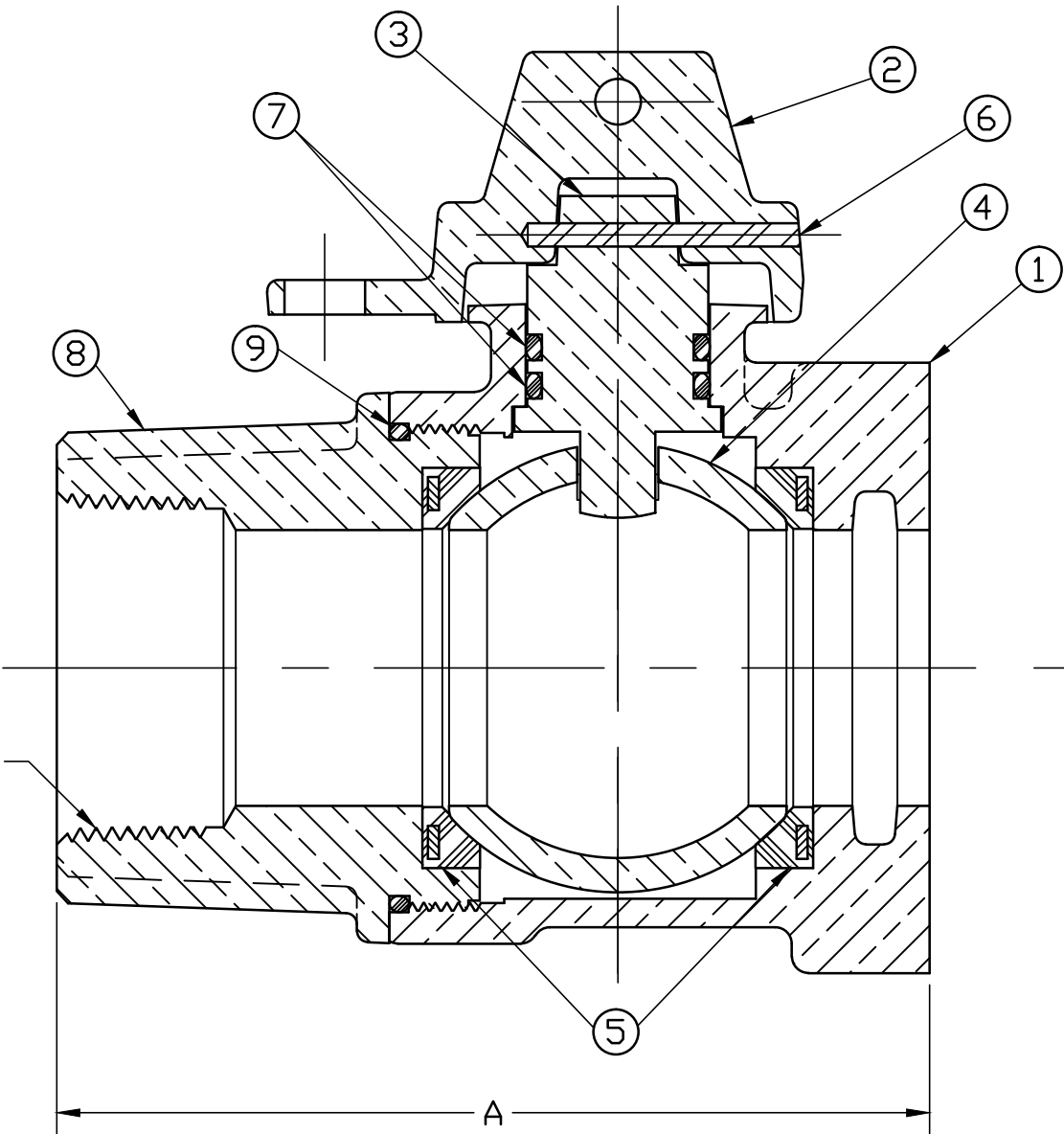


No.	DESCRIPTION	MATERIAL DESCRIPTION
1	BODY	CAST LOW LEAD BRASS ALLOY
2	CAP	CAST BRASS ASTM B62 ALLOY C83600
3	STEM	LOW LEAD BRASS ALLOY
4	BALL	LOW LEAD BRASS ALLOY
5	GASKET	NITRILE ASTM D2000
6	SOLID PIN	AISI 304 ANNEALED STAINLESS STEEL
7	O-RING	EP ASTM D2000
8	END PIECE	CAST LOW LEAD BRASS ALLOY
9	O-RING	EP ASTM D2000



VALVE SIZE	A	NPT SIZE
1-1/2"	4-61/64"	1-1/2"
2"	5-49/64"	2"

"NPT" THR'D

TITLE TO AND OWNERSHIP OF THIS ENGINEERING DATA REMAINS IN Mueller Co. NO USE IS TO BE MADE OF THIS DATA EXCEPT AS SPECIFICALLY AUTHORIZED BY Mueller Co. ASSENT ON THE PART OF THE RECIPIENT TO THESE CONDITIONS IS PRESUMED

FILEPATH: PROD-ENG\JJ\SUBMITTALS\E1912WJ

REV	ECR	DESCRIPTION	DATE	BY	CHKR

DRFTR	RWB	2/4/10	JONES	
CHKR				
ENGR				
MGR				
			UNLESS OTHERWISE NOTED	THIRD ANGLE PROJECTION
			SURFACE PREPARATION:	
			BREAK CORNER(S) ---- .000	
			SURFACE FINISH -- XX RMS	REF. No.
			TOLERANCE(S):	SCALE
			LINEAR ----- ± .000	
			ANGULAR ----- ± 0°00'	
			STK No:	
			MAT'L:	
			DESCR.	
			BALL STRAIGHT LLB METER VALVE	DWG NUMBER
			(FIP x METER FLANGE)	E1912WJ

DWG NUMBER
E1912WJ
JJ-MRKTNG