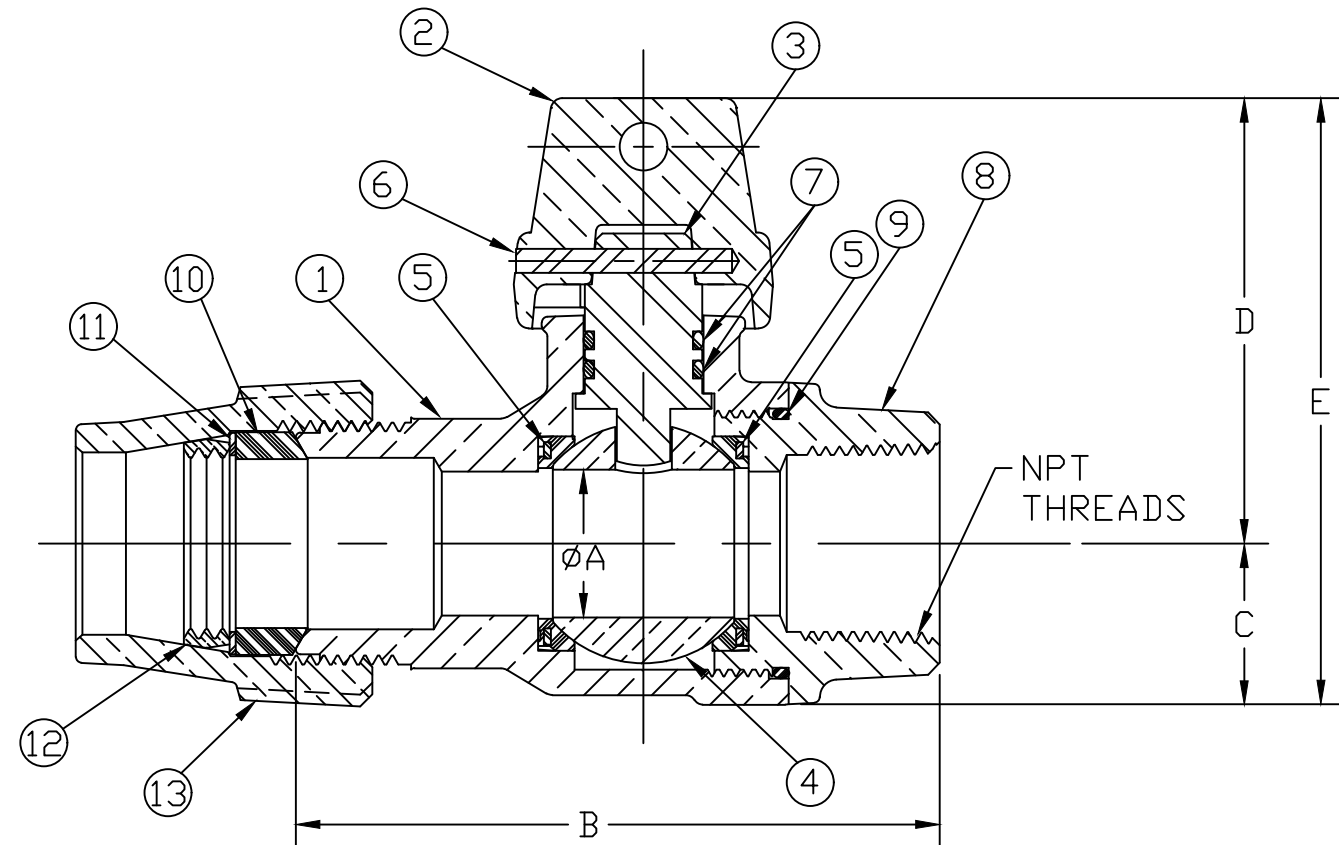


No.	DESCRIPTION	MATERIAL DESCRIPTION
1	BODY	CAST LOW LEAD BRASS ALLOY
2	CAP	CAST LOW LEAD BRASS ALLOY
3	STEM	LOW LEAD BRASS ALLOY
4	BALL	LOW LEAD BRASS ALLOY
5	GASKET	ASTM D2000 (NITRILE)
6	SOLID PIN	AISI 303 STAINLESS STEEL
7	O-RING	ASTM D2000 (EP)
8	END PIECE	CAST BRASS ASTM B62 ALLOY C83600
9	O-RING	ASTM D2000 (EP)
10	PJ GASKET	BUNA-N ASTM D2000
11	PJ WASHER	POLYPROPYLENE
12	COMPRESSION RING	BRASS ASTM B505 ALLOY C83600
13	COMPRESSION NUT	CAST BRASS ASTM B62 ALLOY C83600

SIZE	øA	B	C	D	E
2"	2.00	5.22	1.82	3.92	5.74



ALL WETTED PARTS ARE LOW LEAD BRASS ALLOY

FILEPATH: PROD-ENG\JJ\SUBMITTALS\E1921G

						DRFTR	RWB	11/8/18	JONES	UNLESS OTHERWISE NOTED THIRD ANGLE PROJECTION SURFACE PREPARATION: BREAK CORNER(S) ---- .000 SURFACE FINISH --XXX RMS TOLERANCE(S): LINEAR ----- ± .000 ANGULAR ----- ± 0°00'	REF. No.	SCALE FULL
						CHKR						
						ENGR						
						MGR						
							BY	DATE	STK No:			
									MAT'L:			
									DESCR.	INLINE LLB BALL CURB VALVE (CTS GRIP x FIP)		DWG NUMBER E1921G
									PER EST NO: DXXXX	EST FIN WT = 0.0000 lbs		

DWG NUMBER
E1921G
442-MRKTG

TITLE TO AND OWNERSHIP OF THIS ENGINEERING
DATA REMAINS IN Mueller Co. NO USE IS TO BE
MADE OF THIS DATA EXCEPT AS SPECIFICALLY
AUTHORIZED BY Mueller Co. ASSENT ON THE PART
OF THE RECIPIENT TO THESE CONDITIONS IS PRESUMED