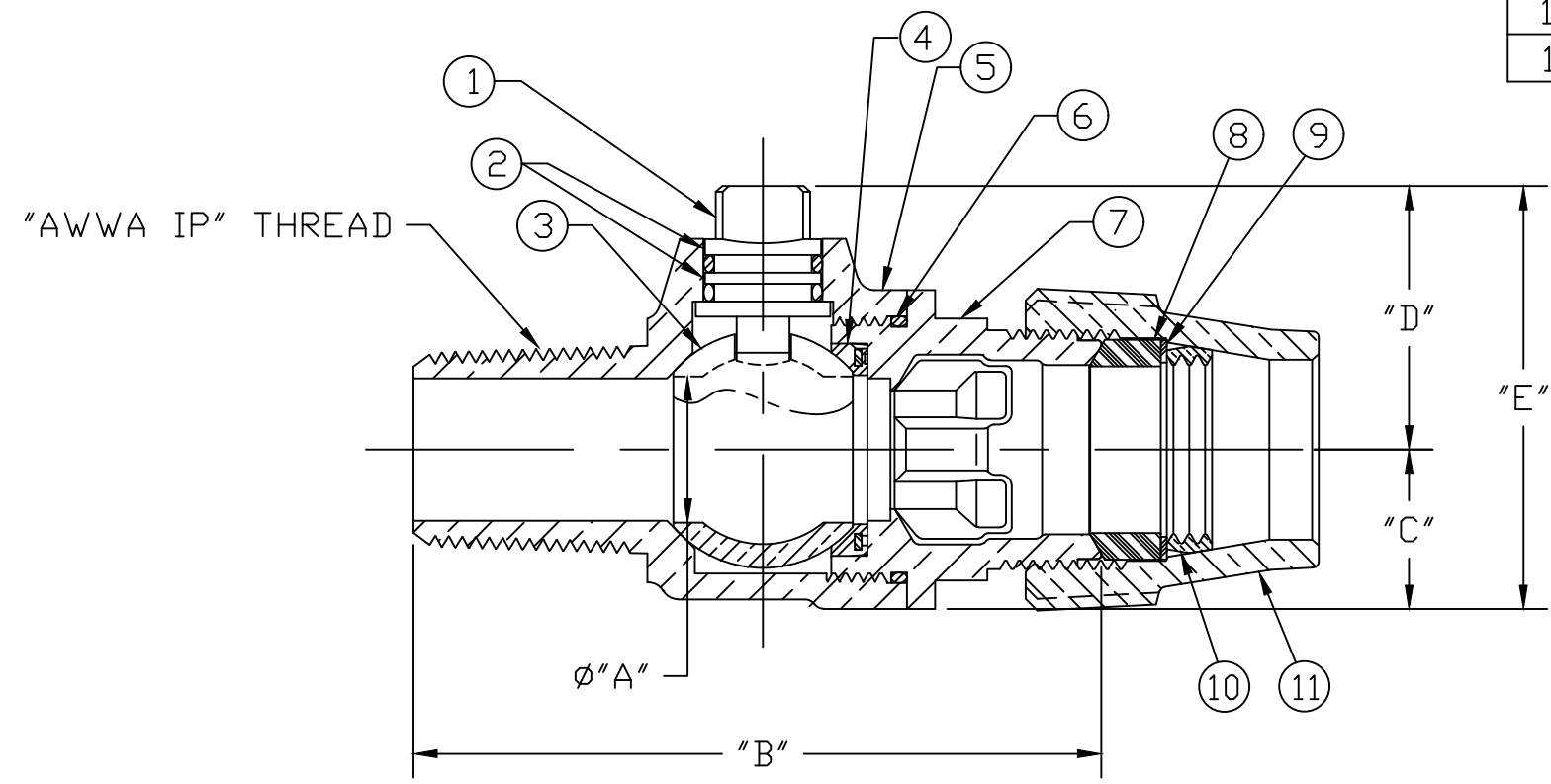


No.	DESCRIPTION	MATERIAL
1	STEM	NO LEAD BRASS ALLOY
2	O-RING	EPDM D2000
3	BALL	NO LEAD BRASS ALLOY
4	GASKET - SEAL	EPDM D2000
5	BODY	CAST NO LEAD BRASS ALLOY
6	O-RING	EPDM D2000
7	END PIECE	CAST NO LEAD BRASS ALLOY
8	PJ GASKET	BUNA-N ASTM D2000
9	PJ WASHER	POLYPROPYLENE
10	COMPRESSION RING	BRASS ASTM B505 ALLOY C83600
11	COMPRESSION NUT	CAST BRASS ASTM B62 ALLOY C83600



SIZE	ØA	B	C	D	E
3/4	.750	3.621	.840	1.363	2.203
3/4x1	.750	3.855	.840	1.390	2.230
1	1.000	4.648	1.150	1.564	2.714
1-1/2	1.500	5.157	1.500	2.120	3.620
1-1/2x2	1.500	5.133	1.500	2.235	3.735
2	2.000	5.612	1.820	2.443	4.263

ALL WETTED PARTS ARE NO LEAD BRASS ALLOY

FILEPATH: PROD-ENG\JJ\ASYSUBMITTALS\E1935G

						DRFTR	RWB	11/30/18	JONES					
						CHKR								
						ENGR								
						MGR								
									UNLESS OTHERWISE NOTED	THIRD ANGLE PROJECTION				
									SURFACE PREPARATION:					
									BREAK CORNER(S) ---- .000					
									SURFACE FINISH -- XX RMS	REF. No.	SCALE			
									TOLERANCE(S):		NONE			
									LINEAR ----- ± .000					
									ANGULAR ----- ± 0°00'					
									STK No:					
									MAT'L:					
									DESCR.	BALL CORPORATION NLB VALVE	DWG NUMBER			
										("AWWA IP" x GRIP)	E1935G			
									REV	ECR	DESCRIPTION	DATE	BY	CHKR
									PER EST NO: DXXXX EST FIN WT = 0.0000 lbs					

DWG NUMBER
E1935G
442-MRKTG

TITLE TO AND OWNERSHIP OF THIS ENGINEERING DATA REMAINS IN Mueller Co. NO USE IS TO BE MADE OF THIS DATA EXCEPT AS SPECIFICALLY AUTHORIZED BY Mueller Co. ASSENT ON THE PART OF THE RECIPIENT TO THESE CONDITIONS IS PRESUMED