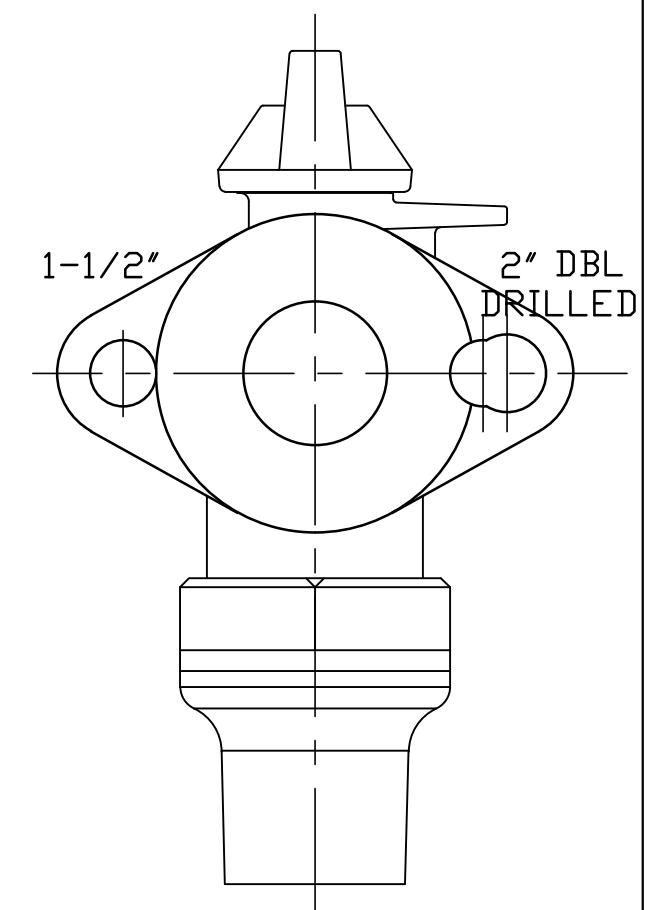
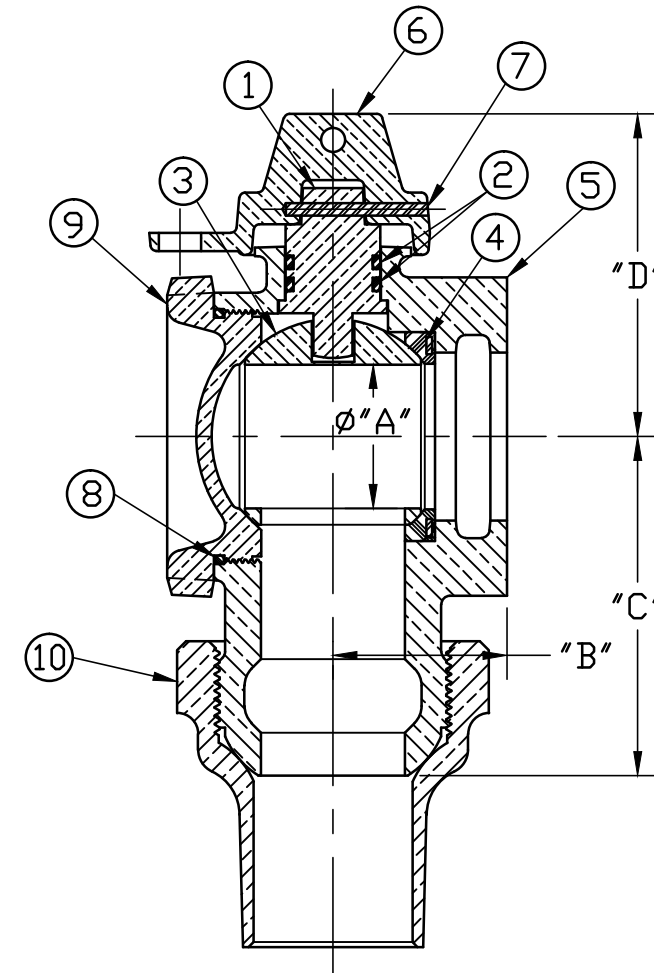


| No. | DESCRIPTION | MATERIAL |
|-----|--------------|-----------------------------------|
| 1 | STEM | CAST LOW LEAD BRASS ALLOY |
| 2 | O-RING | EPDM ASTM D2000 |
| 3 | BALL | CAST LOW LEAD BRASS ALLOY |
| 4 | GASKET-SEAL | NITRILE ASTM D2000 |
| 5 | BODY | CAST LOW LEAD BRASS ALLOY |
| 6 | CAP | CAST BRASS ASTM B62 ALLOY C83600 |
| 7 | SOLID PIN | AISI 304 ANNEALED STAINLESS STEEL |
| 8 | O-RING | EPDM ASTM D2000 |
| 9 | SEALING PLUG | CAST LOW LEAD BRASS ALLOY |
| 10 | TUBE NUT | CAST BRASS ASTM B62 ALLOY C83600 |



| SIZE | ØA | B | C | D |
|--------|------|------|------|------|
| 1-1/2" | 1.50 | 1.81 | 3.53 | 3.36 |
| 2" | 2.00 | 2.19 | 4.34 | 4.06 |

ALL WETTED PARTS ARE LOW LEAD BRASS ALLOY

FILEPATH: PROD-ENG\JJ\SUBMITTALS\E1973W

| | | | | | | |
|---|-----|-------------|---------------------------|------------------------|------|------------|
| DRFTR | RWB | 11/12/09 | JONES | | | |
| CHKR | | | | | | |
| ENGR | | | | | | |
| MGR | | | | | | |
| BY DATE | | | UNLESS OTHERWISE NOTED | THIRD ANGLE PROJECTION | | |
| STK No: | | | SURFACE PREPARATION: | REF. No. SCALE | | |
| MAT'L: | | | BREAK CORNER(S) ---- .000 | | NONE | |
| DESCR. | | | SURFACE FINISH -- XX RMS | PLOT HALF | | |
| BALL ANGLE LLB METER VALVE | | | TOLERANCE(S): | | | |
| PER EST NO: DXXXX EST FIN WT = 0.0000 lbs | | | LINEAR ----- ± .000 | | | |
| | | | ANGULAR ----- ± 0°00' | | | |
| REV | ECR | DESCRIPTION | DATE | BY | CHKR | DWG NUMBER |
| | | | | | | E1973W |

DWG NUMBER
E1973W
 JJ-MRKTG

TITLE TO AND OWNERSHIP OF THIS ENGINEERING
 DATA REMAINS IN Mueller Co. NO USE IS TO BE
 MADE OF THIS DATA EXCEPT AS SPECIFICALLY
 AUTHORIZED BY Mueller Co. ASSENT ON THE PART
 OF THE RECIPIENT TO THESE CONDITIONS IS PRESUMED