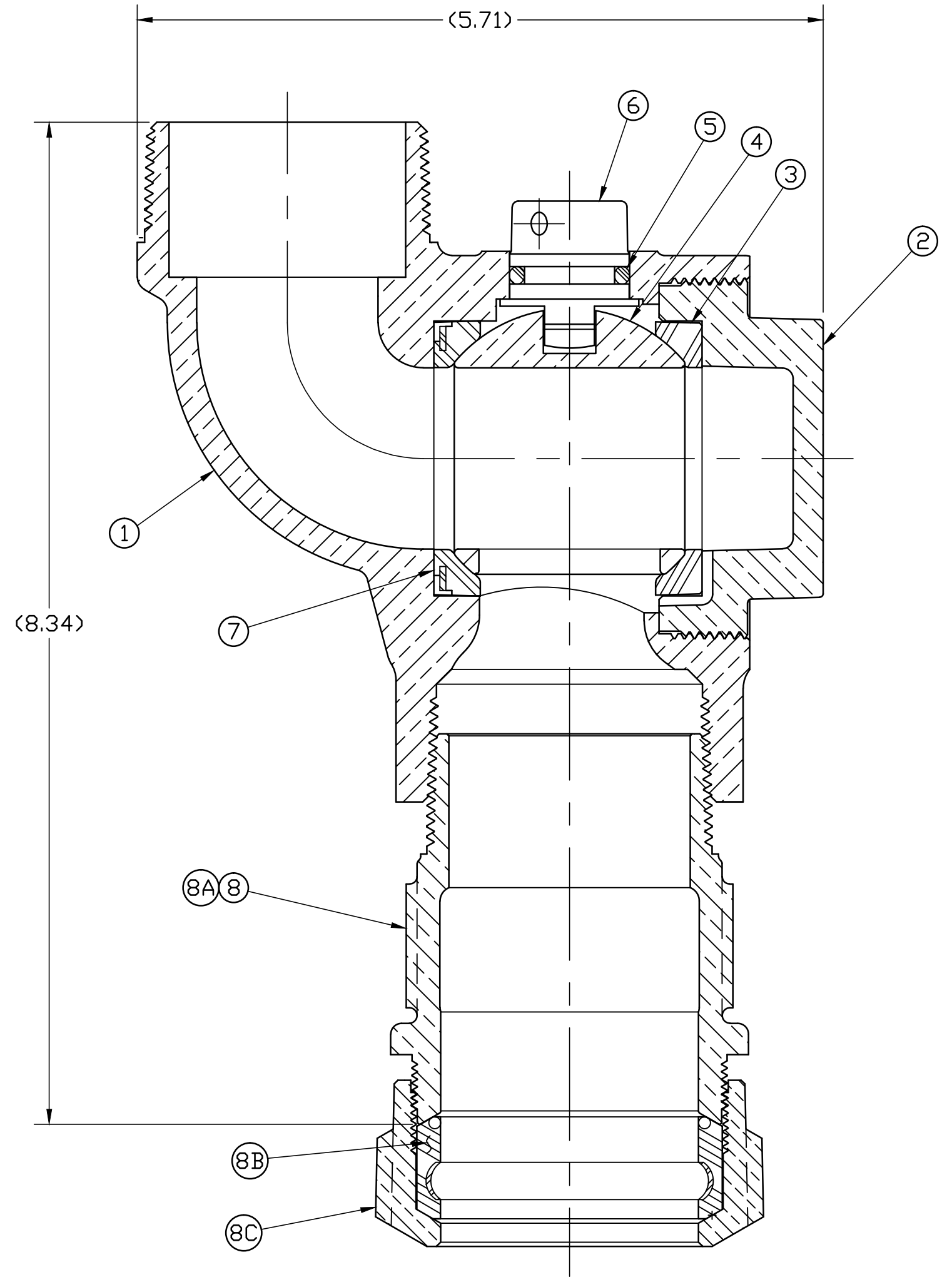
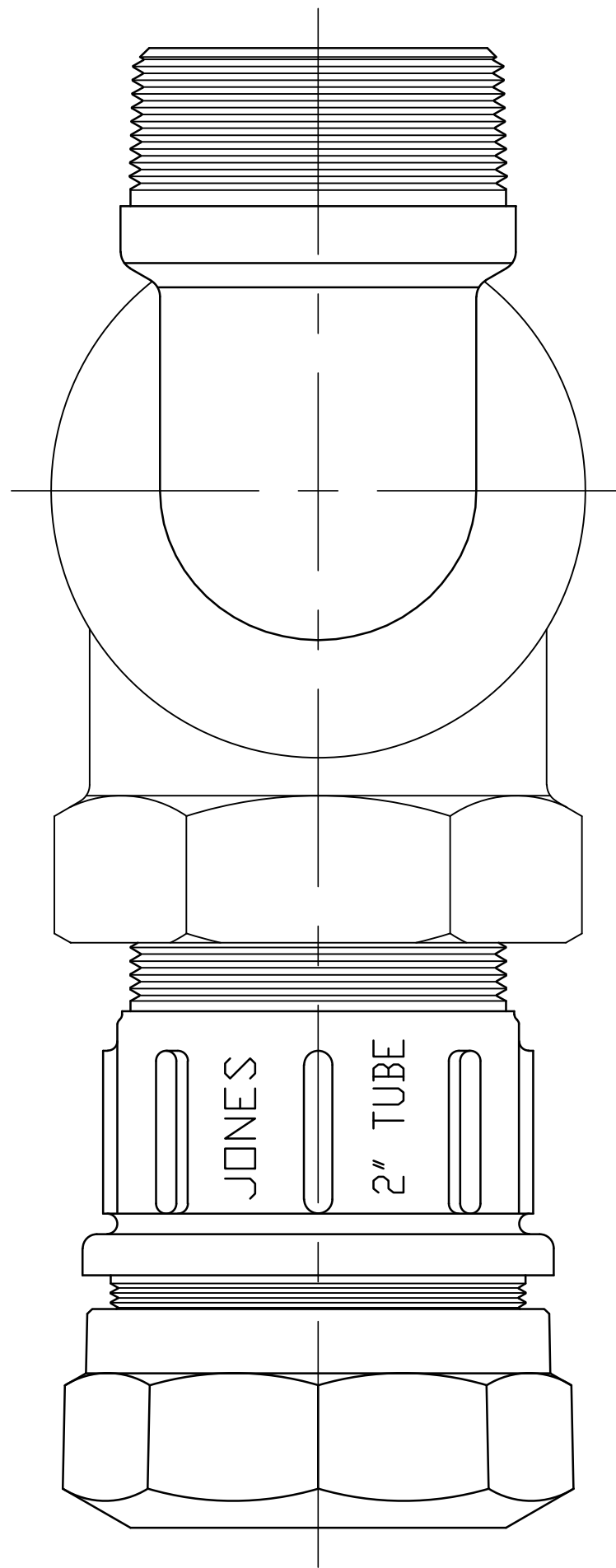


DWG NUMBER
E1998 2

No.	DESCRIPTION	MATERIAL
1	BODY	CAST LOW LEAD BRASS ALLOY
2	END PIECE	CAST LOW LEAD BRASS ALLOY
3	BEARING	DELTRIN ACETAL HOMOPOLYMER
4	BALL	LOW LEAD BRASS ALLOY
5	O-RING	EP ASTM D2000
6	STEM	CAST LOW LEAD BRASS ALLOY
7	GASKET	SBR ASTM D2000 -GSKT 410ss -BAND
8	COUPLING SUB	
8A	COUPLING	CAST LOW LEAD BRASS ALLOY
8B	CTS GASKET SUB	ASTM D2000 410ss
8C	CONNECTION NUT	CAST BRASS ASTM B62 ALLOY C83600



ALL WETTED PARTS ARE LOW LEAD BRASS ALLOY

FILEPATH: PRODD-ENG\JAMESJONES\ASYSUBMITTALS\E1998 2

DRFTR	RWB	3/2/15	JONES			
CHKR						
ENGR						
MGR						
UNLESS OTHERWISE NOTED			THIRD ANGLE PROJECTION			
SURFACE PREPARATION:			REF. No.	SCALE		
BREAK CORNERS) ---- .000						
SURFACE FINISH -- XX RMS			FULL			
TOLERANCE(S):						
LINEAR ----- ± .000						
ANGULAR ----- ± 0°00'						
BY			DATE			
STK No:						
MAT'L:						
DESCR:			2" REDUCED PORT LLB BLOW-OFF VALVE			
PER EST NO: DXXXX EST FIN WT = 0.00000 lbs			CTS 110 x MIP			
REV	ECR	DESCRIPTION	DATE	BY	CHKR	DWG NUMBER
						E1998 2

TITLE TO AND OWNERSHIP OF THIS ENGINEERING DATA REMAINS IN MUELLER CO. NO USE IS TO BE MADE OF THIS DATA EXCEPT AS SPECIFICALLY AUTHORIZED BY Mueller Co. ASSENT ON THE PART OF THE RECIPIENT TO THESE CONDITIONS IS PRESUMED

WAS EXP NO: NONE