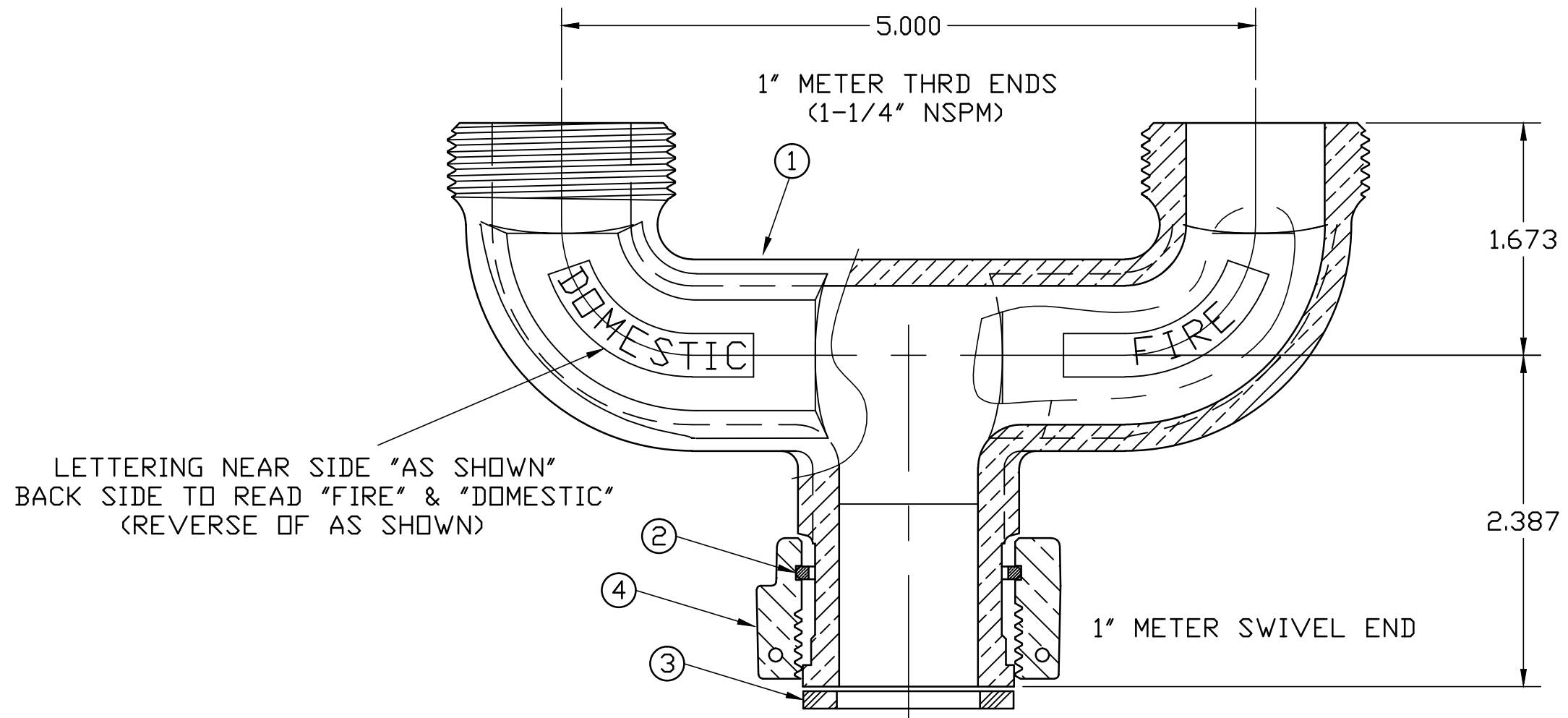


No.	DESCRIPTION	MATERIAL
1	U-BRANCH	CAST LOW LEAD BRASS ALLOY
2	SNAP RING	COPPER ALLOY WIRE CDA521
3	RUBBER GASKET	NITRILE ASTM D2000
4	METER NUT	CAST BRASS ASTM B62 ALLOY C83600



LETTERING NEAR SIDE "AS SHOWN"
 BACK SIDE TO READ "FIRE" & "DOMESTIC"
 (REVERSE OF AS SHOWN)

ALL WETTED PARTS ARE LOW LEAD BRASS ALLOY

FILEPATH: PROD-ENG\JJ\SUBMITTALS\E2632

DWG NUMBER
 E2632
 JJ-MRKING

TITLE TO AND OWNERSHIP OF THIS ENGINEERING
 DATA REMAINS IN Mueller Co. NO USE IS TO BE
 MADE OF THIS DATA EXCEPT AS SPECIFICALLY
 AUTHORIZED BY Mueller Co. ASSENT ON THE PART
 OF THE RECIPIENT TO THESE CONDITIONS IS PRESUMED

						DRFTR	JGarvin	6/8/11	JONES		
						CHKR					THIRD ANGLE PROJECTION
						ENGR					
						MGR					REF. No.
								BY	DATE		
								STK No:			
								MAT'L:			
								DESCR.	1" MSN x 1" MTR THRD LLB U-BRANCH		
										DWG NUMBER E2632	
REV	ECR	DESCRIPTION	DATE	BY	CHKR						