

# JONES®

a **MUELLER** brand

## OPERATING INSTRUCTIONS MANUAL

# Bronze Wet Barrel Hydrant

TABLE OF CONTENTS	PAGE
Inspection / Installation	2
Testing	3
Maintenance	4
Parts Information	5
Notes	6-7

### **WARNING:**

1. Read this manual prior to installation and follow instructions carefully.
2. Proper training and periodic review of this manual is essential to prevent possible serious injury and/or property damage.
3. Use proper Personal Protective Equipment (PPE) (including Hard hat, safety shoes, safety vest, safety glasses, work gloves, etc.) when installing or working on the Hydrant.
4. Use proper tools when installing or working on the Hydrant.
5. Use only Jones operating wrenches.
6. Use only Jones repair parts.
7. Follow AWWA Manual of Water Practices M-17 Installation, Field Testing, and Maintenance of Fire Hydrants.

*Note: "Warning" and "Caution" messages (flagged with an exclamation symbol) indicate procedures that must be followed exactly to avoid equipment damage, physical injury, or death.*

### INSPECTION

Prior to installation hydrants must be inspected at the time of delivery to ensure there is no damage related to shipping and handling. Upon delivery verify compliance with required specifications to include:

- Correct model hydrant
- Correct operating nut size and shape on stem & cap
- Correct size outlet nozzles
- Correct inlet flange bolt pattern

The hydrant will arrive with each valve in the closed position. Each valve stem should be cycled from closed to full open and back to closed to ensure no damage occurred during shipment. If the stem is difficult to operate, repairs are needed. All external bolts and nuts should be tight.

Each hydrant is shipped with an inlet flange cover in place. If this cover is damaged or has been removed, visually inspect the inside of the hydrant from the inlet flange to ensure no foreign material or debris has entered the hydrant. Recover the inlet flange until time of installation.

All inspected hydrants that will not be immediately installed should have valves closed, nozzle caps secured, and inlet covered.



### INSTALLATION

Proper installation and selection of the hydrant location will ensure many years of service with minimal routine maintenance required.

A primary consideration to prevent damage to the hydrant while in service is locating the hydrant to avoid impact by vehicles and roadway equipment. Where a code or Municipal specification for curb set-back is not present, the recommended curb set-back (AWWA M17) is 2 ft minimum from the face of the curb to the nearest point on the hydrant. In rural areas where no curb is present, use a larger set-back, ensuring the hydrant is accessible to fire-fighting equipment. When installing a Jones® Tell-Tail™ break check traffic valve, a concrete thrust collar with minimal dimensions of 2 ft diameter and 6 inches thick must be installed at the ground bury line to absorb the potential shock of a traffic impact.

Poor load-bearing soil conditions may warrant a larger thrust collar. The inlet main should be supported by firm footings to ensure settling or sinking of the hydrant does not occur.

#### Installation Instructions

**1.** Connect the hydrant to a water main intended to provide adequate fire hydrant flow volume. Refer to AWWA C600, *Standard for Installation of Ductile-Iron Water Mains and Their Appurtenances*, and local fire codes or fire authority requirements.

**NOTE:** Always ensure an isolation valve is located between the hydrant and the main to permit the water supply to be cut-off for maintenance.

**2.** Install the hydrant as plumb (vertical) as possible, allowing adequate clearance at the ground bury line to access flange bolts. The pumper outlet nozzle should face the curb without obstructions by light poles, signs, benches or other obstacles that may prevent direct

access to the pumper nozzle from the street. Additionally, there should be no obstructions that prevent quick access and operation of nozzle caps and stems.

**3.** Following installation, the hydrant should be flushed to remove any foreign material and disinfectant chemicals (if any).

**NOTE:** When closing the valves of newly installed hydrants watch for debris or objects that may become wedged in the valve opening.

**4.** Following installation of the hydrant, ensure all caps are tight enough to prevent removal by hand and the auxiliary valve is in the full open position.


**5.** Initiate a record of the hydrant to include the following essential information; location of hydrant, location of auxiliary valve, date of installation, type & model hydrant, size of nozzle outlet & op nuts and, if available, flow data.

### TESTING

#### Pressure Testing at Main Line Pressure

The following procedure is for pressure testing a hydrant for leaks at line pressure following maintenance repairs or the installation of a new hydrant.

1. With the auxiliary valve closed, remove the top nozzle cap and slightly open the top valve.
2. Slowly open the auxiliary valve and allow any air in the system to escape from the top nozzle valve opening.
3. After all the air has escaped from the hydrant system (evidenced by water coming out of the top nozzle outlet), close the top outlet valve and completely open the auxiliary valve.

 **CAUTION: Trapped air in a water system can become compressed and present a safety hazard, use caution.**

4. With all caps removed, and the hydrant pressurized to line pressure, visually inspect for leaks at the flange joint, outlet nozzles, valve disc's, and stem inserts around the stem.

**NOTE: Before leaving the factory, all hydrants are pressure tested at 400 psi.**


5. If leaks are observed, repair or replace faulty component and re-test to ensure hydrant is leak free.

#### Pressure Testing at Pressures Above Main Line Pressure

The following procedure is for pressure testing a hydrant above line pressure. This test may be performed to verify that hydrant is leak free at rated working pressure (i.e., 200 psi).

1. With all nozzle caps removed, connect a water pressure test pump to a lower outlet nozzle.
2. Ensure there is no trapped air in the hydrant by slightly opening top valve. Close valve after all air has escaped and only water comes out of top nozzle outlet.
3. Close the auxiliary valve to isolate hydrant and open the hydrant outlet valve connected to the test pump.

4. Following the pump manufacturer's directions, pump up to the required test pressure.

 **CAUTION: trapped air in a water system can become compressed and present a safety hazard, use caution.**

5. With all caps removed, and the hydrant pressurized, visually inspect for leaks at the flange joint, outlet nozzles, valve disc's, and stem inserts around the stem.

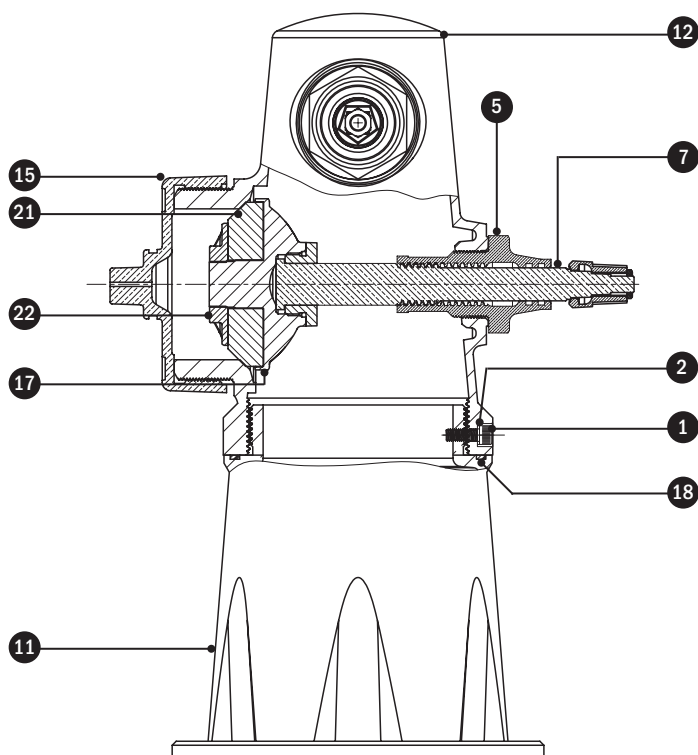
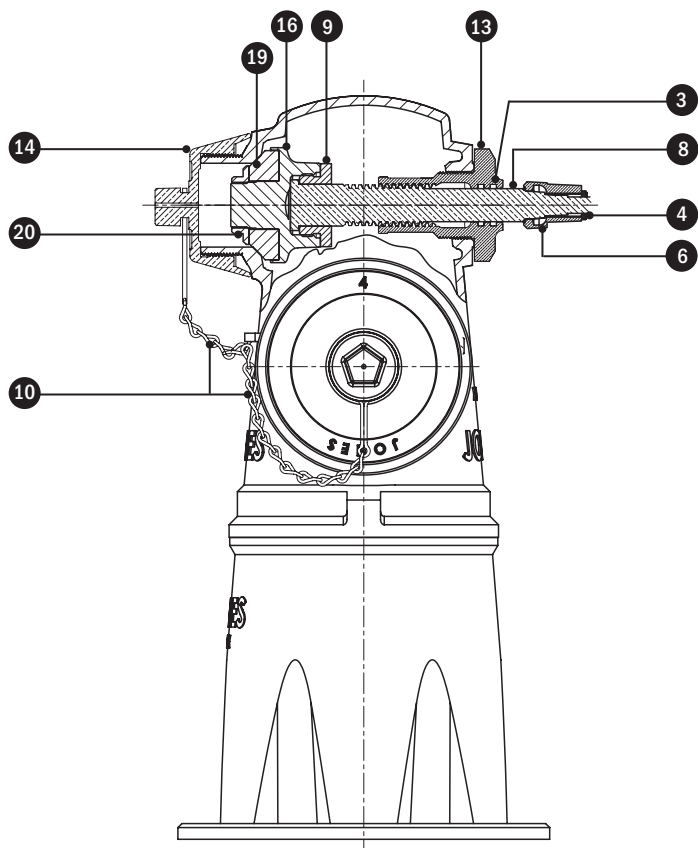
**NOTE: before leaving the factory, all hydrants are pressure tested at 400 psi.**

6. If leaks are observed, repair or replace faulty component and re-test to ensure hydrant is leak free.
7. Close outlet valve at test pump and open auxiliary valve to return hydrant to service.

### ROUTINE MAINTENANCE

To ensure the hydrant is in proper working condition when needed, a routine inspection and maintenance program should be implemented and followed. Hydrants should be inspected and exercised at least annually. A record should be kept on the performance of routine maintenance, findings during inspection, and recommended actions. Flow measurements should be periodically recorded for each hydrant, refer to AWWA M17 for flow measurement procedures. The inspection and maintenance crew should carry spare parts such as chains and caps to perform simple repairs. Local fire code and fire authority guidelines should be followed at all times. The following guidelines should be carried out by authorized and trained personnel.

- 1.** With caps removed, visually inspect hydrant inlet flange joint, outlet nozzles, valve seats, and stem inserts for leaks. If leaks are present, attempt to correct the leak by tightening the component. If leak is not resolved, mark hydrant for follow-up repairs.
- 2.** Inspect cap chains and cap rings for binding. Cap rings should rotate freely.
- 3.** Inspect outlet nozzle threads for damage or foreign material buildup. If needed, clean threads and recoat with a non-toxic anti-seize. If needed clean cap threads and ensure cap vent hole is open.
- 4.** Note any paint condition that may require follow-up coating. For iron hydrants there should be no bare metal exposed.
- 5.** Close auxiliary valve to isolate hydrant.
- 6.** With hydrant isolated from line pressure, fully open and close each valve two times, or until valve stem moves freely. The valve stem and mating components are made of corrosion resistant material. Some hard water conditions will cause deposits to accumulate. Exercising the stem will clear the deposit.
- 7.** Visually inspect the valve disc from the outlet nozzle opening. The disc material should not be indented by the seat more than  $\frac{1}{8}$ ". If damage to the disc, or excessive indentation, is observed, mark hydrant for follow-up repairs.
- 8.** Close all hydrant valves leaving the top outlet valve slightly open to allow air to vent when water is restored to the hydrant.
- 9.** Slowly open the auxiliary valve.
- 10.** When all air has evacuated the hydrant (evidenced by water coming out of the outlet nozzle), close the hydrant outlet valve.
- 11.** Attach a short length of hose to allow water to run onto the street, or attach a diffuser nozzle. Operate hydrant valve through one full cycle. Repeat for each outlet nozzle. Use caution to avoid soil erosion.
- 12.** Close each valve and tighten each nozzle cap so that the caps may not be removed by hand.
- 13.** Ensure the auxiliary valve is fully opened.
- 14.** Record inspection and required follow-up actions (if needed).
- 15.** Return hydrant to service.



### PARTS LIST

ID	DESCRIPTION	MATERIAL
1	Screw	316 Stainless Steel
2	Stat-O-Seal	BUNA-N & Stainless Steel
3	O-Ring	Mueller Rubber R34
4	Stem Nut	ASTM B62 UNS C83600
5	Insert (medium)	ASTM B584 UNS C89833
6	Operating Nut	ASTM B584 UNS C87600
7	4" Stem	ASTM B584 UNS C87600
8	2 1/2" Stem	ASTM B584 UNS C87600
9	Stem Locknut	ASTM B584 UNS C89833
10	Chain	Steel, Zinc Finish
11	Spool	ASTM B584 UNS C89833 or C87600
12	Hydrant Head	ASTM B584 UNS C89833 or C87600
13	Insert (short)	ASTM B584 UNS C89833
14	2 1/2" Cap	Yellow Cylolac Plastic
15	4" Cap	Yellow Cylolac Plastic
16	2 1/2" Disc Holder	ASTM B584 UNS C89833
17	4" & 4 1/2" Disc Holder	ASTM B584 UNS C89836
18	O-Ring	Aluminum
19	Hydrant Disc	BUNA-N
20	Disc Locknut	ASTM B584 UNS C89833
21	Hydrant Disc	BUNA-N
22	Disc Locknut	ASTM B584 UNS C89833





**MUELLER® | ECHOLOGICS® | HYDRO GATE® | HYDRO-GUARD® | JONES® | MI.NET® | MILLIKEN® | PRATT® | SINGER® | U.S. PIPE VALVE & HYDRANT**

---

1.800.423.1323 - [www.muellercompany.com](http://www.muellercompany.com) - [moreinfo@muellercompany.com](mailto:moreinfo@muellercompany.com)

**INTERNATIONAL** - 1.423.490.9555 - [www.mueller-international.com](http://www.mueller-international.com) - [international@muellercompany.com](mailto:international@muellercompany.com)

Mueller refers to one or more of Mueller Water Products, Inc., a Delaware corporation ("MWP"), and its subsidiaries. MWP and each of its subsidiaries are legally separate and independent entities when providing products and services. MWP does not provide products or services to third parties. MWP and each of its subsidiaries are liable only for their own acts and omissions and not those of each other. MWP brands include Mueller®, Echologics®, Hydro Gate®, Hydro-Guard®, Jones®, Mi.Net®, Milliken®, Pratt®, Pratt Industrial®, Singer®, and U.S. Pipe Valve & Hydrant. To learn more, please see [www.muellerwp.com/about](http://www.muellerwp.com/about).



© 2020 James Jones Company, LLC. All Rights Reserved. The trademarks, logos and service marks displayed in this document herein are the property of James Jones Company, LLC, its affiliates or other third parties. Products marked with a section symbol ( § ) are subject to patents or patent applications. For details, visit [www.mwppat.com](http://www.mwppat.com). These products are intended for use in potable water applications. Please contact your Jones Sales or Customer Service Representative concerning any other application(s).