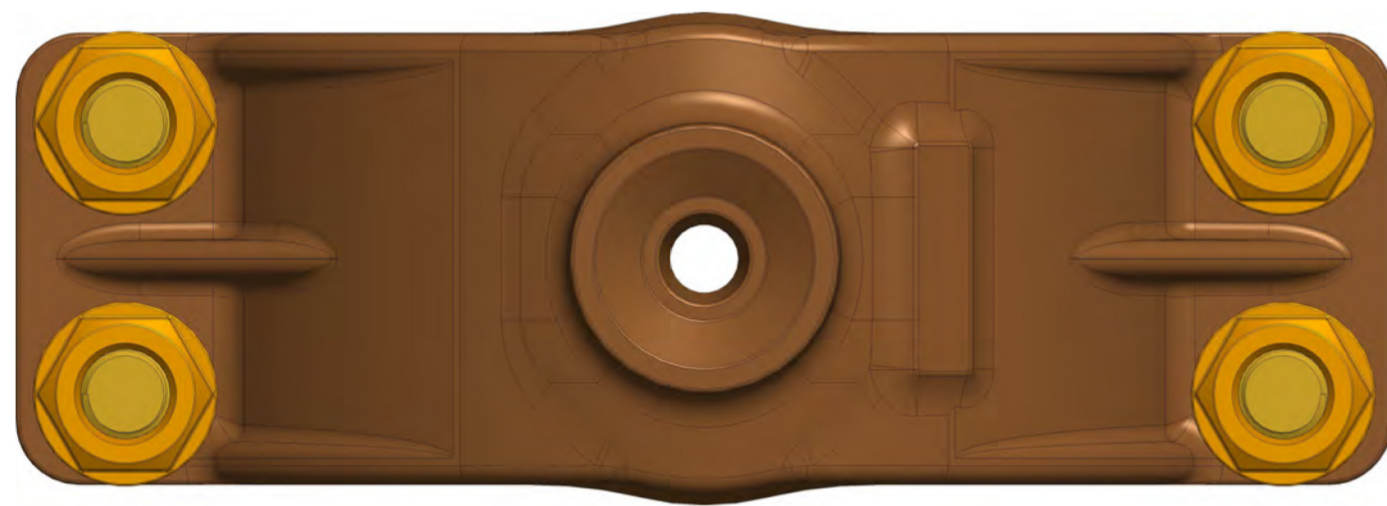


NOMINAL MAIN SIZE	PIPE OD RANGE	C.C. TAPPING SIZE CATALOGUE SERIES #					F.I.P.T. TAPPING SIZE CATALOGUE SERIES #				
		.75"	1"	1.25"	1.5"	2"	.75"	1"	1.25"	1.5"	2"
4"	4.74"-5.10"	---	---	38-1096	38-1132	38-1168	---	---	38-1077	38-1114	38-1150
	4.74"-5.32"	38-1010	38-1011	---	---	---	38-1008	38-1009	---	---	---
	5.10"-5.40"	---	---	38-1012	38-1018	38-1016	---	---	38-1013	38-1015	38-1017
6"	6.84"-7.45"	38-1022	38-1023	38-1099	38-1135	38-1171	38-1020	38-1021	38-1609	38-1117	38-1153
8"	8.99"-9.67"	38-1034	38-1035	38-1102	38-1138	38-1174	38-1032	38-1033	38-1083	38-1120	38-1156
10"	11.04"-12.12"	38-1050	38-1051	38-1104	38-1142	38-1178	38-1048	38-1049	38-1105	38-1124	38-1160
12"	13.14"-14.58"	38-1062	38-1063	38-1109	38-1145	38-1181	38-1060	38-1061	38-1090	38-1127	38-1163
14"	15.22"-16.88"	38-1070	38-1071	---	38-1147	38-1183	38-1068	38-1069	---	38-1129	38-1165
16"	17.32"-19.19"	38-1074	3-1075	---	38-1148	38-1184	38-1072	38-1073	---	38-1130	38-1166
18"	18.00"-19.50"	38-1700	38-1701	38-1702	38-1703	38-1704	38-1705	38-1706	38-1707	38-1708	38-1709
20"	20.00"-21.60"	38-1710	38-1711	38-1712	38-1713	38-1714	38-1715	38-1716	38-1717	38-1718	38-1719
24"	24.00"-25.80"	38-1725	38-1726	38-1727	38-1728	38-1729	38-1720	38-1721	38-1722	38-1723	38-1724

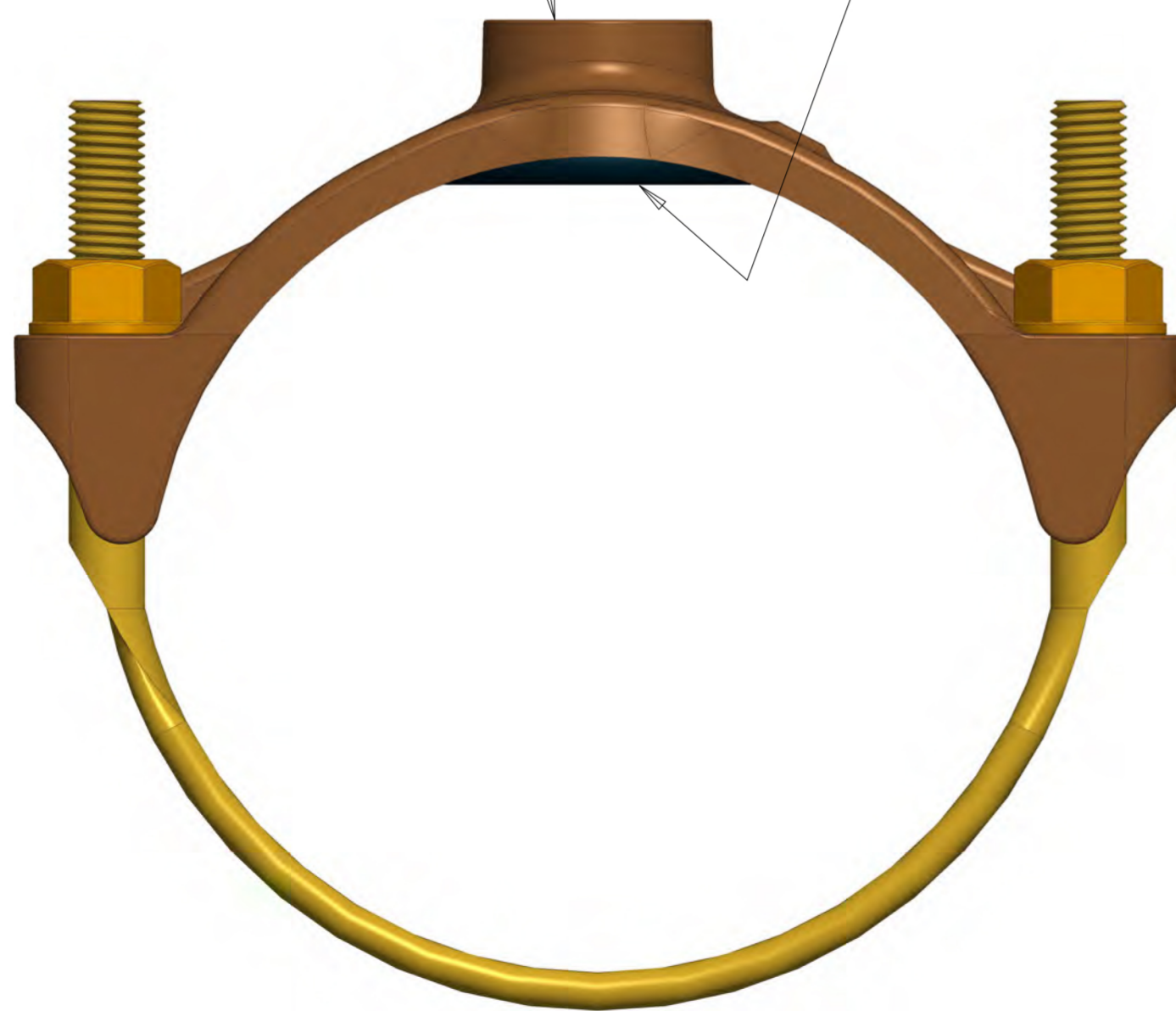
---: DESIGNATES THAT SIZE/APPLICATION IS NOT AVAILABLE.

ALL ASSEMBLIES NSF-61 CERTIFIED

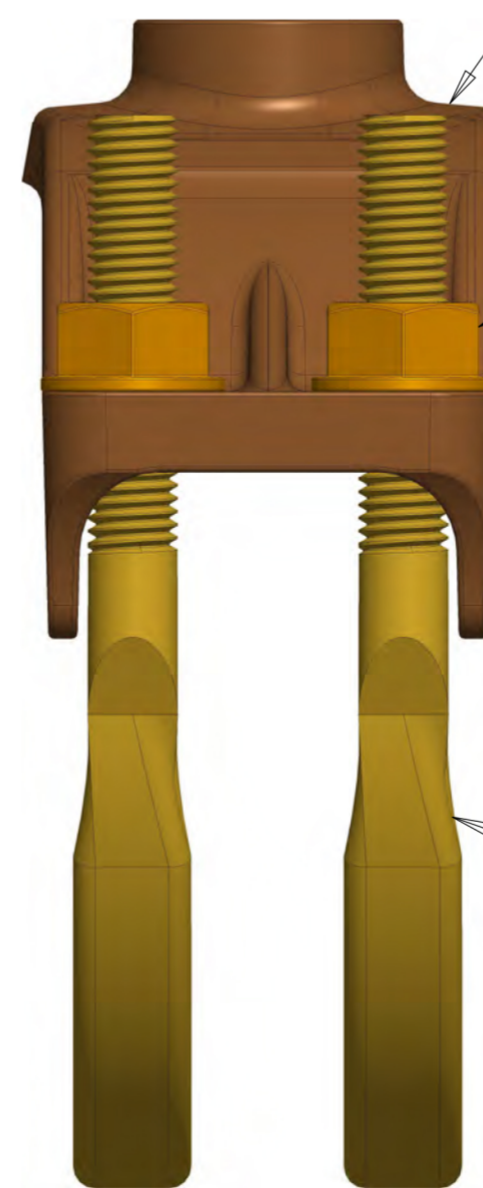


TAPPING SIZE (SEE TABLE)

NITRILE O-RING CENTERED IN GROOVE FOR SOLID RETENTION AND PROPER SEALING



SADDLE - BRONZE
ASTM B62 ALLOY C83600



FLANGE NUT - SILICON BRONZE
ASTM B62 ALLOY 83600

STRAP - BRONZE
ASTM B98 ALLOY C65100



J-979 SADDLE SHOWN ABOVE

DR BY: E. BAUMGARTNER	06/16/2021	UNLESS OTHERWISE NOTED	THIRD ANGLE PROJECTION	C.B. NO.
ENGR:		BREAK CAST CORNERS(S)		
MGR:		BREAK MACH CORNERS(S)	PURCH:	FINISH:
MFG:		TOLERANCES UNLESS OTHERWISE NOTED	REF. NO.	SCALE:
TOOL:		LINEAR	ANGULAR	NONE
FDRY:			STR. NO.	
MATERIAL: SEE PRINT				
		DESCR: J-979 SERIES SERVICE SADDLES BRONZE SERVICE SADDLE WITH DOUBLE BRONZE STRAPS		NUMBER JONES-J-979_SUBMITTAL